

IS CVS SAFE? CVS has been proven to be a safe procedure for both mother and baby. Miscarriages may occur spontaneously before and after CVS, independent of the procedure. The possible risk of a miscarriage related to the CVS procedure is between 0.5% (1 in 200 chance) to 1% (1 in 100 chance). A repeat CVS may be suggested if enough villi are not obtained. About 1-2% of women receive inconclusive test results which require an amniocentesis.

HOW ARE THE TESTS RESULTS

REPORTED? The chromosome results are usually completed in less than 10 days. Some special genetic testing may require additional time for completion. Most CVS tests will be normal. If the test results show your baby has a disorder, the nature of the disorder will be discussed with you. Prenatal diagnosis assists couples in making informed decisions and helps with the management of their pregnancy. Genetic counseling is available. Please discuss any questions you may have with your physician or counselor.

COMPLIMENTS OF:

**FOR ALL BILLING QUESTIONS, CALL
GENECARE AT (866) 485-3336
FOR CLINICAL QUESTIONS CALL
(800) 277-4363**

GeneCare Medical Genetics Center
201 Sage Road, Suite 300
Chapel Hill, NC 27514
(919) 942-0021 • Fax (919) 967-9519

Chorionic Villus Sampling

GENECARE™
Medical Genetics Center
www.genecare.com

Many parents want information about the health of their unborn baby (fetus). Although most women give birth to healthy babies, some women have an increased chance of giving birth to a baby with a birth defect. Doctors rely on personal and family medical histories, physical exams, and various procedures and tests to help identify women who may have a baby with birth defects. Some of these women can benefit from Chorionic Villus Sampling (CVS). CVS is a medical procedure performed between 10 - 13 weeks gestation in which tiny pieces of the early placenta (a tissue on the outside of the fetal gestational sac) are obtained for chromosome analysis.

WHO SHOULD CONSIDER CVS?

You and your doctor can decide whether you will benefit from CVS. Each woman's case is different. CVS may be recommended for:

- Women who will be 35 or older at delivery
- Couples who have had a baby with a birth defect
- Couples who have a relative with a chromosome abnormality (e.g. Down syndrome), mental retardation or a genetic disorder
- Couples who have experienced two or more pregnancy losses (spontaneous abortions, stillbirths, or neonatal deaths)
- Couples with an increased risk of having a baby affected with Down syndrome based on first trimester prenatal screening
- Couples who are concerned about having a baby with a chromosome anomaly

WHAT IS A CHROMOSOME

ABNORMALITY? Chromosomes are units of genetic information. Chromosome abnormalities are usually caused at conception by an abnormal sperm or egg which contains extra or missing chromosome material. Each person has some abnormal sperm or eggs, but the risk of an abnormal conception increases with the mother's age.

Babies with a chromosome abnormality usually have mild to severe mental retardation and birth defects. The most common chromosome abnormality is Down syndrome.

WHICH TESTS ARE PERFORMED BY

CVS? Specific tests are performed depending on the indications.

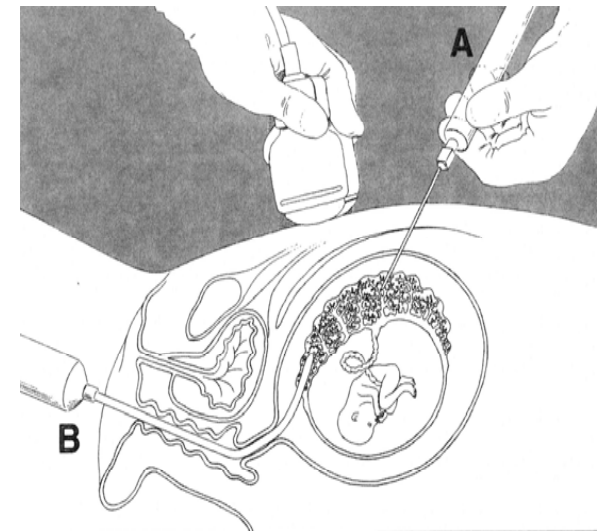
- **Chromosome analysis** - In the laboratory, the cells from the CVS procedure are grown in a special nutritional fluid. Chromosomes in the cells of the fetus are then analyzed. This prenatal test accurately detects about 99% of chromosome abnormalities.
- **Inherited genetic disorders** - Some couples are carriers of genetic disorders which can be detected by CVS. Examples of these disorders for which carrier testing and prenatal diagnosis are available include Cystic Fibrosis and Tay-Sachs.

Normal CVS tests do not eliminate the possibility your baby may have birth defects and/or mental retardation not detectable by these tests.

To screen for open spine and skull defects which are not detected by CVS, a maternal serum alpha-fetoprotein (MSAFP) blood test and/or an ultrasound exam are performed at 16 - 18 weeks gestation.

HOW IS CVS PERFORMED? If you choose to have CVS, a physician will examine your fetus by ultrasound. A small instrument is gently moved across your abdomen to produce images of the fetus on a TV screen. The ultrasound exam confirms the dating of your pregnancy, and determines the best area for sampling. Some women say CVS does not hurt at all, others feel some pressure or cramping.

Your doctor performs the CVS by placing a small catheter tube through the vagina or placing a needle through the abdomen under ultrasound guidance to collect a small sample of tissue from the placenta. Do not empty your bladder during the hour before the ultrasound exam. Drink only regular amounts of fluid (without caffeine). For a few women CVS cannot be performed or may need to be rescheduled.



A — Transabdominal CVS
B — Transcervical CVS